

### 产品特性/Product Features

- IP6K9K
- 30A 85°C
- 12-750VDC
- 1000MΩ (1000VDC) , IEC 60664-1
- 符合GB1984.1-2011

额定工作电压		额定工作电流		额定功率		额定寿命		额定短路分断能力	
U <sub>N</sub>		I <sub>N</sub>		P <sub>N</sub>		S <sub>N</sub>		I <sub>sc</sub>	
1	23°C	30A	0.6s	5.4s	30A	10kA	10kA	10kA	10kA
		60A	0.6s	5.4s	60A	10kA	10kA	10kA	10kA
2	85°C	30A	0.6s	5.4s	30A	10kA	10kA	10kA	10kA
		60A	0.6s	5.4s	60A	10kA	10kA	10kA	10kA
注1)		2×10 <sup>4</sup>	450VDC, 30A		1×10 <sup>4</sup>	750VDC, 30A			
		7.5×10 <sup>4</sup>	450VDC, 30A		7.5×10 <sup>4</sup>	450VDC, 30A			
注2)		30A:		60A:60min		80A:20min		160A:30s	
		300A:0.6S							

		1000MΩ(1000VDC)
		3000VAC 1min
		3000VAC 1min
( )		≤30ms
( )		≤10ms
		196m/s <sup>2</sup>
		490m/s <sup>2</sup>
		10Hz ~ 500Hz 49m/s <sup>2</sup>
		5% ~ 85%RH
		-40°C ~ 85°C
		4M
		130g
		53.7mm×36.2mm×39.5mm

12	9	1.2	3.6W
24	18	2.4	3.8W

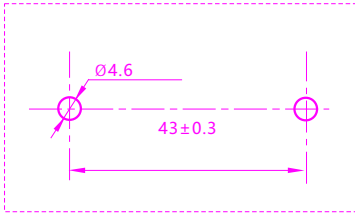
-40°C ~ 85°C)



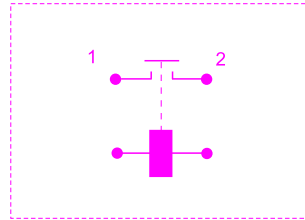
/Unit mm



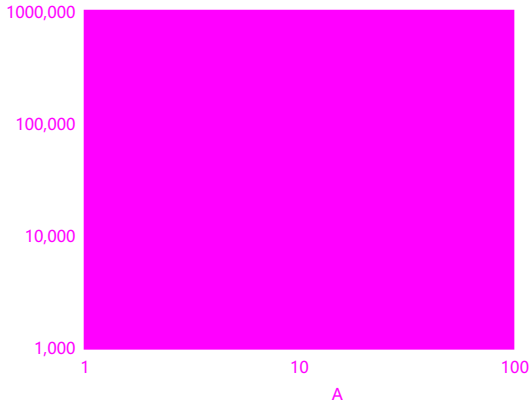
Mounting hole size



Wiring diagram

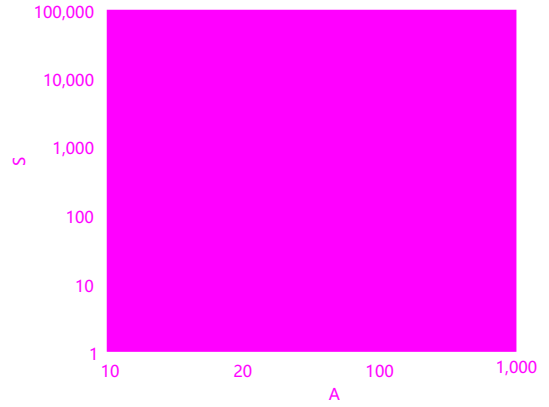


Electrical life curve



/ 0.6S 5.4S

Tolerance curve



85°C, 10mm<sup>2</sup>

1

M4	1.8N·m 2.7N·m	Ø4.0~Ø4.5mm	3mm	M4螺钉	1.8N·m~2.7N·m
----	---------------	-------------	-----	------	---------------

2 10mm<sup>2</sup>

3 3mm

声明/Statement:

声明/Statement: